

Project

Multipurpose Hall and Rehearsal Locality

Site
Client

Weißenbach am Lech, Austria
Gemeinde Weißenbach am Lech

Competition
Start of Design
Start of Construction
Completion

10/2008, 1.Prize
02/2009
09/2009
01/2011

Useful area
Material

1250 m2
Concrete, Steel, Glass, Wood

Design

LAAC Architects
Arch DI Kathrin Aste, Arch DI Frank Ludin
Assistant: Marc Ihle, DI Peter Griebel,
DI Thomas Feuerstein

LAAC zt-gmbh
Kathrin Aste, Frank Ludin

6020 Innsbruck, Austria
Wilhelm Greil Straße 15
T 0043 (0)512 890335
F 0043 (0)512 89033520
E office@laac.eu

Photography

Günter Richard Wett
Architectural photography
6020 Innsbruck, Austria
Mandelsbergerstrasse 9
T 0043(0)699 10096794
E fotogrw@yahoo.de

Please contact the photographer to receive the high resolution pictures and to clarify publication conditions.

Beside the introduced pictures there is a high quality pictorial documentation of the construction available.

Project Description

The new erection of the multipurpose hall is a long, building ascending southward. The ensemble of buildings, primary school, kindergarden and the multipurpose hall define the structure of the village. The orientation towards the road is significant in so far as it provides the school building and its surroundings with an element of introvertedness. The roof of the building is intensively greened over and lies between the school and the kindergarden, cuts into the topography and by surmounting one storey forms a gentle slope and walk-on roof, a toboggan run. The visible cubature of the building is minimized, the spatial design forms part of the landscape. The whole of the green is retained, only the contour lines are redrawn. The natural break in the terrain is emphasized by the connecting path or the connecting tunnel architectonically and spatially emphasized/used. The green is claimed by the kindergarden and the school.

The school is connected to the gym by an underground path that is both weatherproof and thus easily accessible. Immediately above the tunnel there is a ground level path, connecting the entrance level of the school to entrance level of the new building. The basement of the new building including the rehearsal room is provided with an additional ramp for the delivery of instruments and gym apparatus.

The foyer of the new building provides a nexus of different functions - a tribune extends the foyer towards the gym building and thus provides an auditorium for events. In the southern section the foyer is extended by the space of a small locality extends ones view over the forecourt. The three levels - basement, ground floor, and roof - are put to multipurpose use and animate the building as a whole.

The flexibly separable and lockable uses/use units the building opens up according to the requirements of the event, be it Punch and Judy show, indoor football, folklore groups or party basement, be it one after the other or all at the same time.

MHW 16082011 001.jpg



MHW 16082011 010.jpg



MHW 16082011 026.jpg



MHW 16082011 046.jpg



MHW 16082011 048.jpg



MHW 16082011 004.jpg



MHW 16082011 017.jpg



MHW 16082011 037.jpg



MHW 16082011 051.jpg



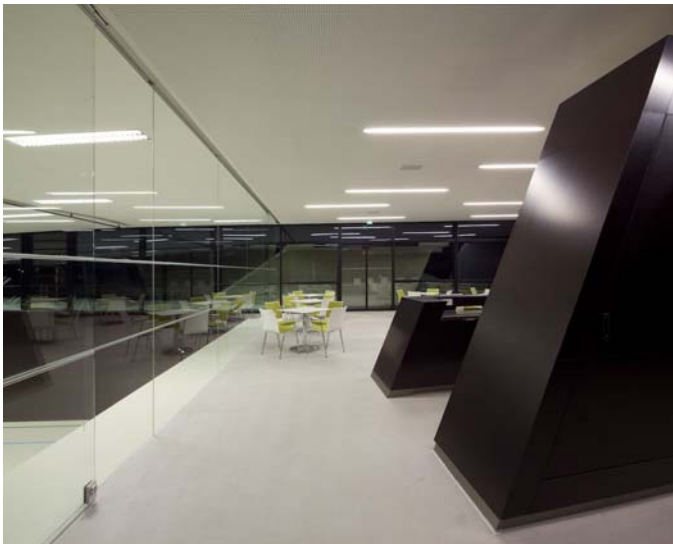
MHW 06122011 037.jpg



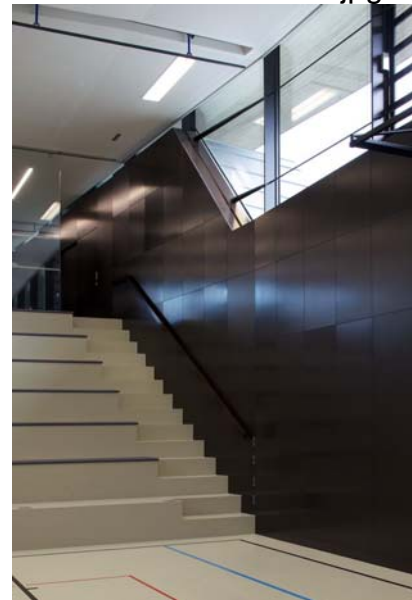
MHW 06122011 055.jpg



MHW 06122011 088.jpg



MHW 16082011 009.jpg



MHW 16082011 039.jpg



MHW 06122011 031.jpg



MHW 06122011 050.jpg



MHW 06122011 057.jpg



MHW 06122011 078.jpg



MHW 16082011 035.jpg



MHW 06122011 020.jpg



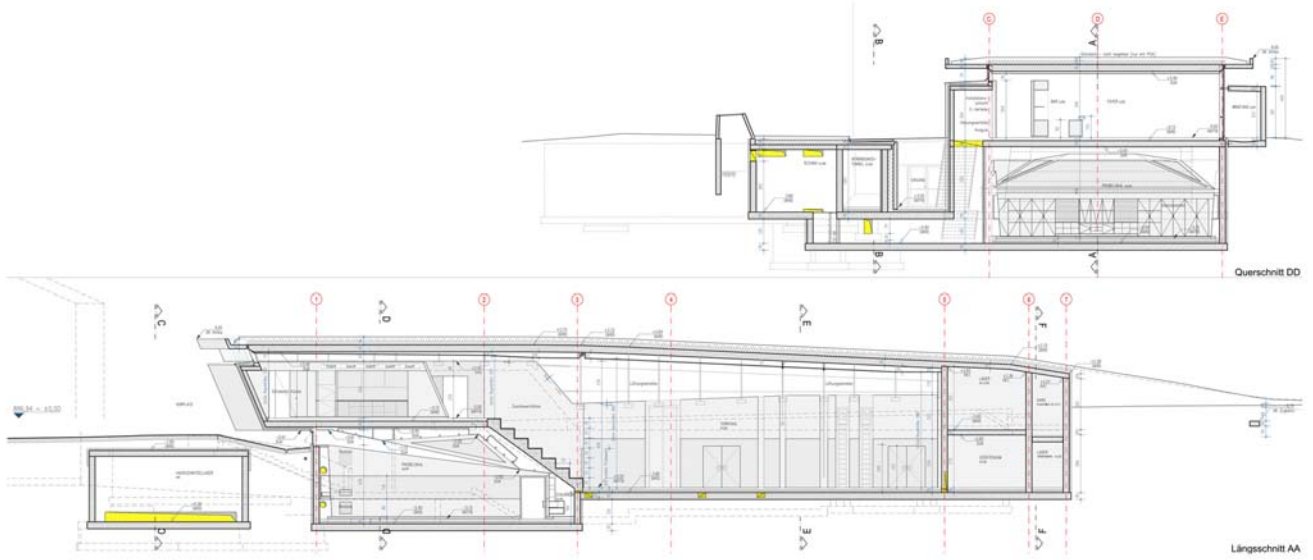
MHW 06122011 062.jpg



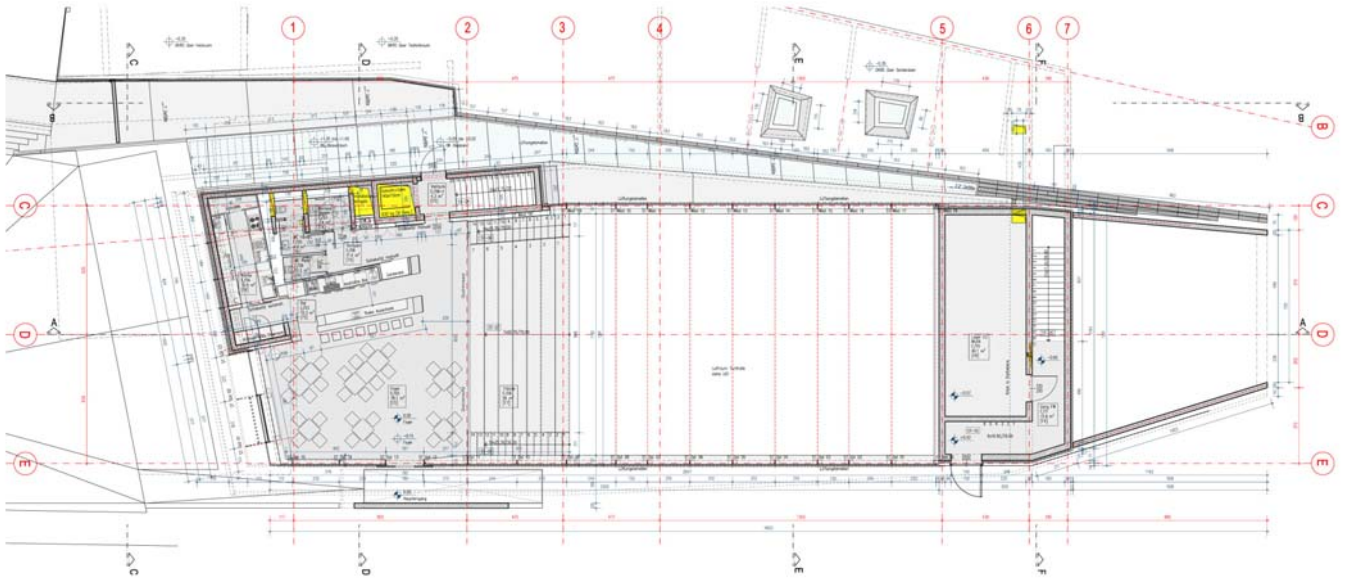
MHW 06122011 068.jpg



LAAC-MHW-DSEC-001-SC.jpg



LAAC-MHW-DSEC-002-SC.jpg



LAAC-MHW-DSEC-003-SC.jpg

